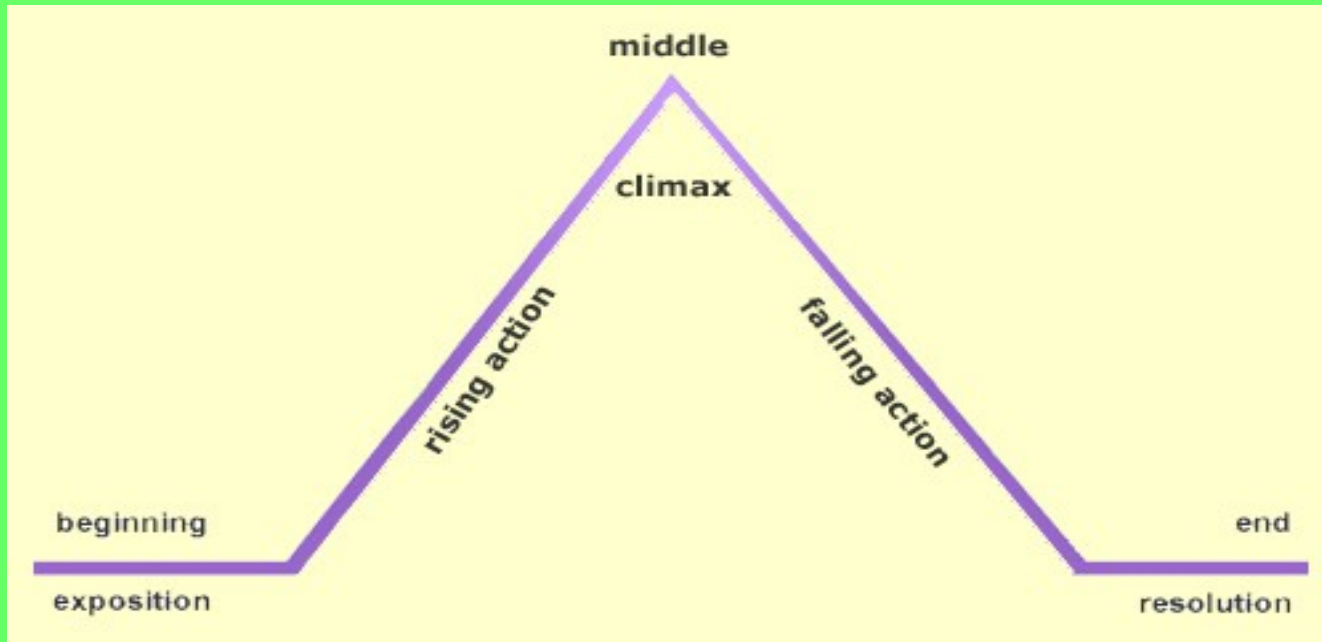


# Plot Structure: Triangle



**Plot:** Plot is the literary element that describes the structure of a story. It shows the a causal arrangement of events and actions within a story.

# Linear Plot

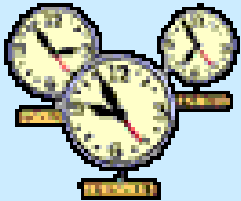
Plots can be told in:



Chronological order



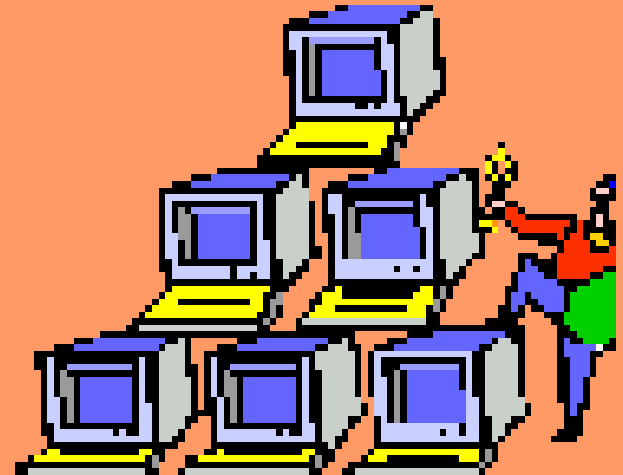
Flashback



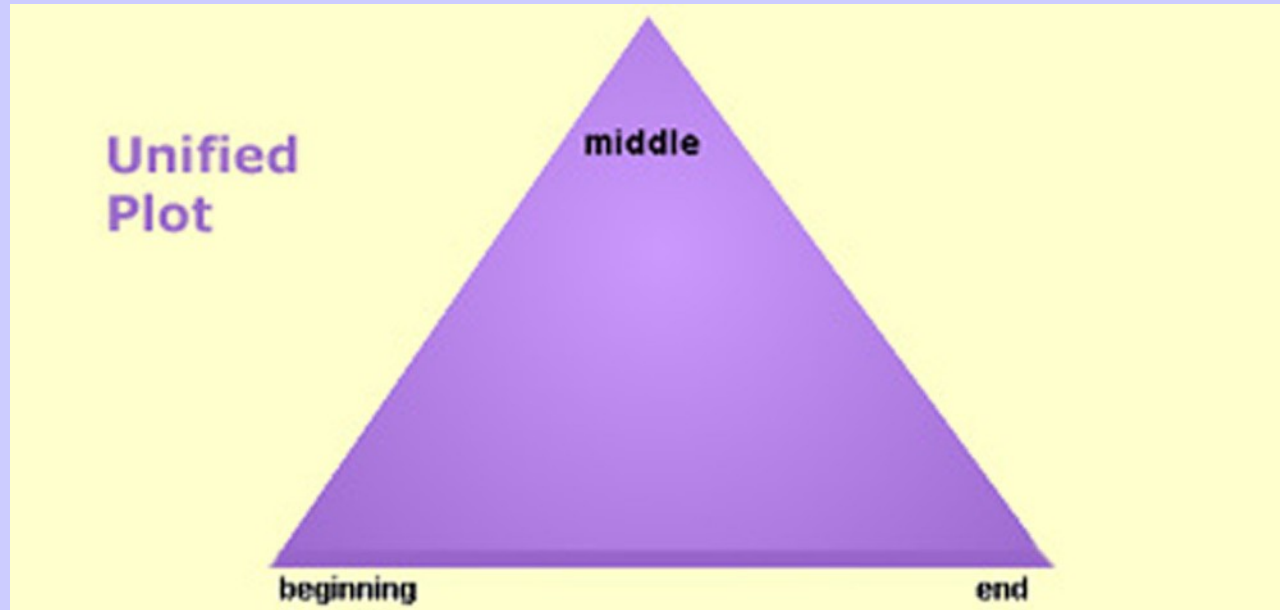
In media res (in the middle of things)  
when the story starts in the middle of the  
action without exposition

# Pyramid Plot Structure

- The most basic and traditional form of plot is **pyramid-shaped**.
- This structure has been described in more detail by **Aristotle** and by **Gustav Freytag**.

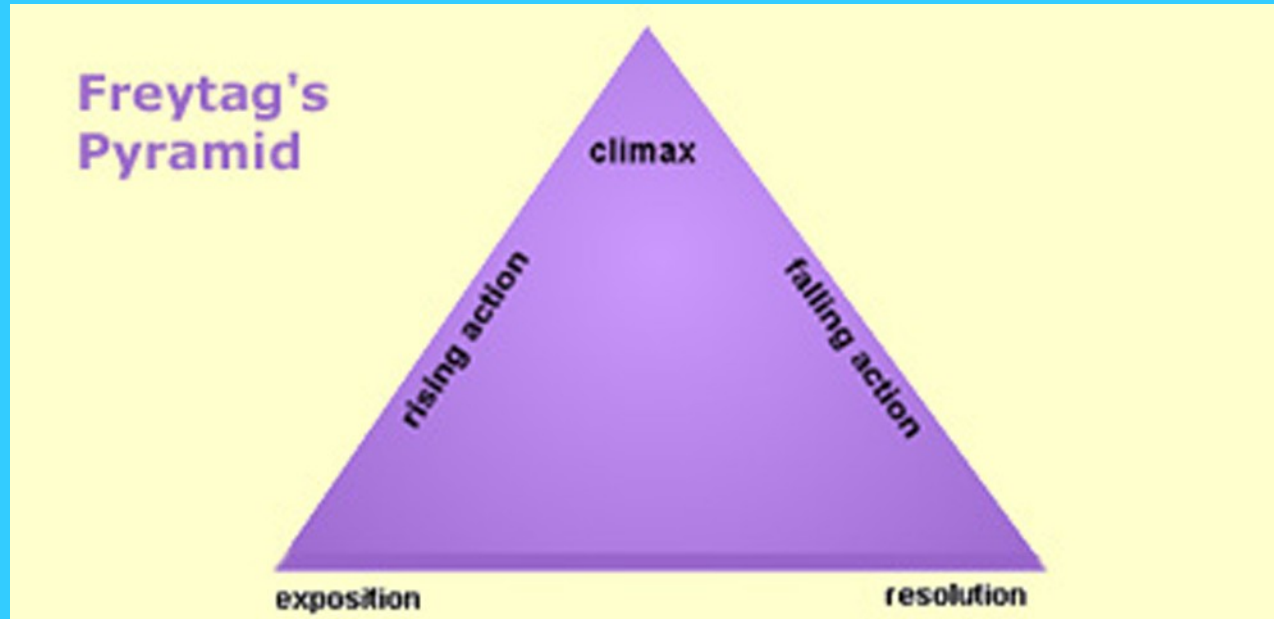


# Aristotle's Unified Plot



Note: The basic triangle-shaped plot structure was described by Aristotle in 350 BCE. Aristotle used the beginning, middle, and end structure to describe a story that moved along a linear path, following a chain of cause and effect as it works toward the solution of a conflict or crisis.

# Freytag's Plot Structure



Note: Freytag modified Aristotle's system by adding a rising action (or complication) and a falling action to the structure. Freytag used the five-part design shown above to describe a story's plot.

# Modified Plot Structure



Freytag's Pyramid is often modified so that it extends slightly before and after the primary rising and falling action. You might think of this part of the chart as similar to the warm-up and cool-down for the story.

# Plot Components



**Climax:** the turning point, the most intense moment—either mentally or in action

**Rising Action:** the series of **conflicts (Int/ext.)** and **crisis** in the story that lead to the climax

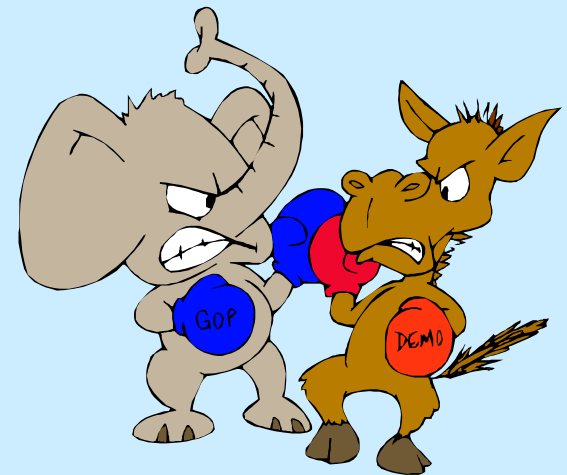
**Falling Action:** all of the action which follows the climax

**Exposition:** Beginning of story that provides important information: Characters, setting, etc.

**Resolution:** the conclusion, the tying together of all of the threads

# Conflict

Conflict is the dramatic struggle between two forces in a story.  
Without conflict, there is no plot.





# Conflict Types

## Conflict Types

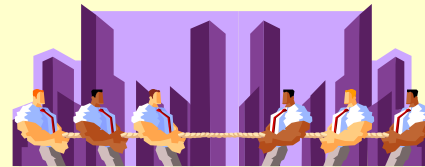
- External Conflicts:

1. Human vs Human



3. Human vs Nature

3. Human vs Society



- Internal Conflict

1. Human vs Self

